



MONTHLY MEMBERSHIP PROGRESS REPORT

District 7 I

Results as of: 4/30/2017

GMT: HAL GRIFFIN

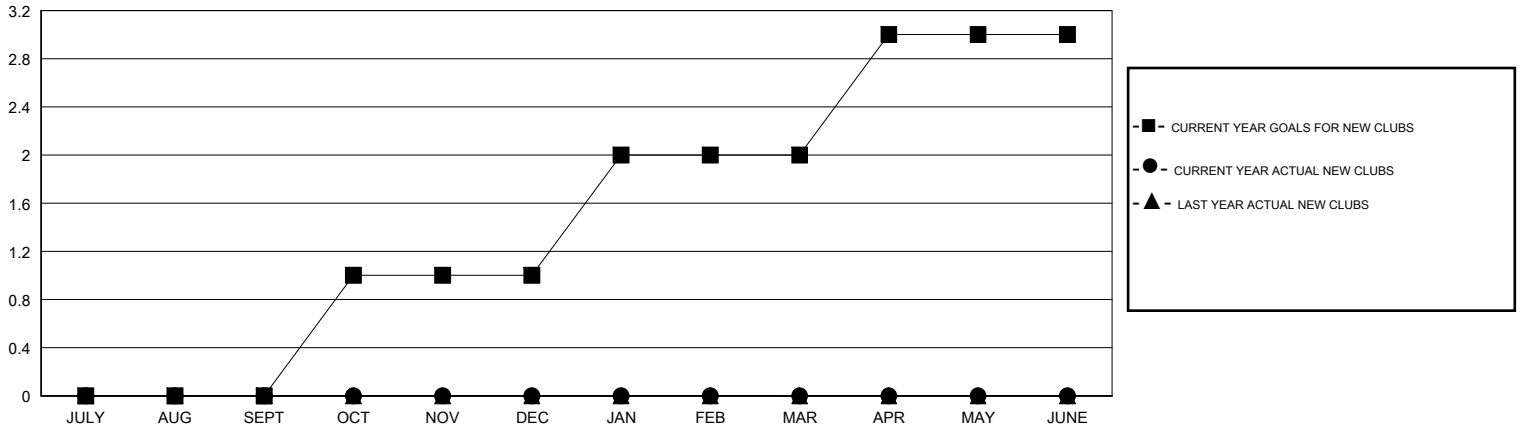
LOCATION ARKANSAS

GMT CA

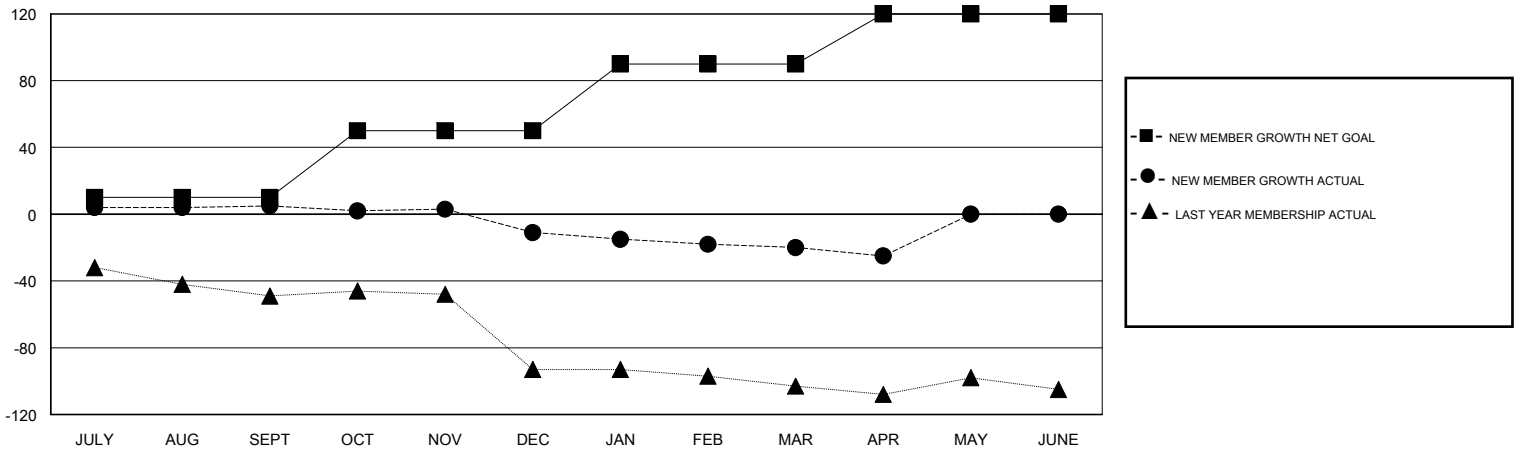
Clubs			
RESULTS FOR 2016-2017			
QUARTER	NEW CLUB GOAL	NEW CLUBS	DROPPED CLUBS
JULY/AUG/SEPT	0	0	0
OCT/NOV/DEC	1	0	0
JAN/FEB/MAR	1	0	0
APR/MAY/JUNE	1	0	0

Members			
RESULTS FOR 2016-2017			
QUARTER	NEW MEMBER GROWTH NET GOAL (not reinstated or transfers)	NEW MEMBER GROWTH ACTUAL (not reinstated or transfers)	DROPPED MEMBERS ACTUAL (including transfers)
JULY/AUG/SEPT	10	28	23
OCT/NOV/DEC	40	23	39
JAN/FEB/MAR	40	29	38
APR/MAY/JUNE	30	4	9

GOALS AND ACTUAL NEW CLUBS CUMULATIVE



GOALS AND ACTUAL MEMBERS CUMULATIVE



DROPPED CLUBS: 0	26 CLUBS OF 39 ADDED 1 OR MORE NEW MEMBERS	GENDER DISTRIBUTION
DROPPED MEMBERS	CLICK HERE FOR CUMULATIVE MEMBERSHIP DATA	MALE 588 (67.74%)
DECEASED 5		FEMALE 280 (32.26%)
CLUB CANCELLED 0		TOTAL FAMILY UNIT MEMBERS 128
OTHER 105		FAMILY MEMBERS PAYING HALF DUES 65
TOTAL 110		